



PENNSYLVANIA LOTTERY

RETAILER EQUIPMENT



THE WAVE 8 TERMINAL

The WAVE 8 is the PA Lottery's top selling terminal used in conjunction with over-the-counter Scratch-Off ticket sales. WAVE 8 sales far exceed all other equipment types.

WAVE 8 & PERIPHERALS

Specifications
W-14" x
D-11¼" x
H-18½"
 Weight—23 lbs
 Power—24 VDC
 Power Cord— 4 Feet



PlayCentral HD-S with SciQ

Specifications
W-36" x D-29" x H-74"
Note: A minimum space of 41" is required in order for the door to properly open for key access.
 Weight—24 Bin: 695 lbs, 40 Bin: 800 lbs
 Power—100/140 VAC
 Power Cord—9 Feet

- * Displays and dispenses 24-40 Scratch-Offs and all Draw and Fast Play Games.
- * Shopping cart allows players to make multiple purchases at once.
- * Players may make purchases with cash, debit or a lottery gift card.
- * Validates Scratch-Offs, Fast Play, and Draw Games.
- * Redeems gift cards and coupons.
- * Issues vouchers, not cash.
- * ADA compliance ensures accessibility to all players.



PlayCentral HD

Specifications
W-35" x D-28" x H-74"
Note: A minimum space of 41" is required in order for the door to properly open for key access.
 Weight—700 lbs
 Power—120/230 VAC
 Power Cord—9 Feet

- * Displays and dispenses up to 24 Scratch-Offs and all Draw and Fast Play Games.
- * Shopping cart allows players to make multiple purchases at once.
- * Players may make purchases with a cash, debit or a lottery gift card.
- * Validates Scratch-Offs, Fast Play, and Draw Games.
- * Redeems gift cards and coupons.
- * Issues vouchers, not cash.
- * ADA compliance ensures accessibility to all players.



Pennsylvania Lottery—Benefits Older Pennsylvanians. Every Day.

PlayCentral EX



Specifications

W-24" x D-23" x H-74 1/2"

Note: A minimum space of 28" is required in order for the door to properly open for key access.

Weight—260 lbs

Power—120/230 VAC

- * Displays and dispenses all Draw and Fast Play Games.
- * Validates Scratch-Offs, Fast Play, and Draw Games.
- * Streamlined design maximizes retailer location space.
- * Redeems PA Lottery coupons.
- * Issues vouchers, not cash.
- * ADA compliance ensures accessibility to all players.

PlayCentral 54



Specifications

W-36" x D-28" x H-54"

Note: A minimum space of 41" is required in order for the door to properly open for key access.

Weight—400 lbs

Power—120/230 VAC

Power Cord—9 feet

- * Displays and dispenses up to 16 Scratch-Offs and all Draw and Fast Play Games.
- * Shopping cart allows players to make multiple purchases at once.
- * Players may make purchases with cash, debit or a lottery gift card.
- * Validates Scratch-Offs, Fast Play, and Draw Games.
- * Redeems PA Lottery coupons.
- * Issues vouchers, not cash.
- * ADA compliance ensures accessibility to all players.

Primary Communication Type

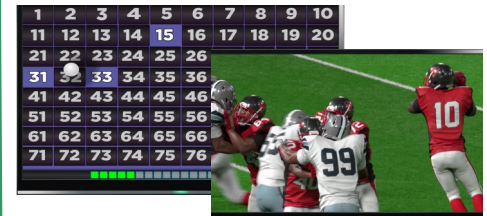
Dual Bands



While there are different types of communication, your technician will install the one best suited for your terminal location.

Monitor Based Games

Require Avantech Media Server



FREQUENTLY ASKED QUESTIONS

Q: Is Scientific Games insured?

A: **Yes**

Q: Can we move or relocate Lottery equipment at our store?

A: **No. You should contact the Pennsylvania Lottery for all equipment relocation requests.**

Q: Do I need a dedicated outlet?

A: **Yes, we recommend a 3-prong, 4-plug outlet similar to the one shown below.**



Installation Process of PA Lottery Equipment

COMMUNICATIONS		TRAINING			INSTALLATION
Telco Authorized Form Returned to SG	Scheduled Communication Installation	Install Communication	Schedule New Terminal Training	New Terminal Training	Install New Terminal at Retailer Location

For Terminal and Communication Issues Please Call 1-800-692-7353

Players must be 18 or older. Please play responsibly. Problem Gambling Helpline: 1-800-GAMBLER (1-800-426-2537)

This Equipment Guide is provided as general guidance to retailers. It does not take the place of the official rules or how-to-play instructions found at palottery.com.